



Small Planet Montessori

education for a peaceful planet

2122 N 53rd Street, Seattle Wa 98103 1-206-632-3434
inquiries@smallplanetmontessori.com www.smallplanetmontessori.com
Newsletter — October 2018



Fun Bat Facts!

- ✿ Bats are some of the smallest mammals on Earth. The tiniest weigh as little as 3 grams...teeny!
- ✿ Of the 136 species found in Central America, only 3 are true "vampire bats", and only one is likely to bite livestock or humans (the other two feed mostly on bird blood).
- ✿ Most bats use echolocation to find prey and navigate in the dark. Ultrasonic calls are emitted and the bat listens for the echoes to "see" in front of it.
- ✿ Fishing bats (Noctilio) troll the surface of the water with their large hind feet, catching small fish and invertebrates in their claws.
- ✿ Not all bats roost in caves. Many tropical bats spend the day in hollow trees, while other species make a tent from large leaves!
- ✿ Bats are important pollinators and seed dispersers in the tropics. Crops such as bananas, cashews, and mangos rely on nectar-feeding bats.
- ✿ The Great False Vampire Bat (Vampyrus spectrum) doesn't drink blood it catches birds and small mammals, including smaller bat species!
- ✿ Worldwide, there are almost 1000 species of bats!
- ✿ Nectar-feeding bats can hover in mid-air, like hummingbirds! Their long tongues reaching deep into flowers for nectar.

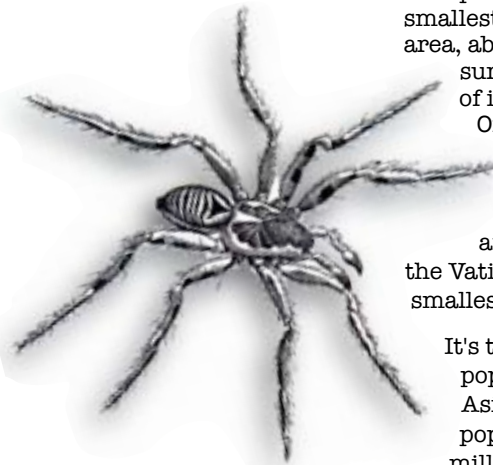
Source: *A Field Guide to the Mammals of Central America and Southeast Mexico*, by Fiona A. Reid. Oxford University Press, New York. 1997.

Dear Parents,

October is here and Halloween is near! Shake out those skeletons and start planning Jack-O'-lantern faces! Autumn winds are blowing and Fall leaves falling. What creatures are in your back yard?

Europe, Bats, & Spiders!

The works for October will be bats for the vertebrate and spiders for the invertebrate. In keeping with the spirit of the season!



The children will be learning about Europe this month.

Europe is one of the seven traditional continents of the Earth.

Europe is the world's second-smallest continent by surface area, about 2% of the Earth's surface and about 6.8% of its land area.

Of Europe's approximately 50 states, Russia is the largest by both area and population, while the Vatican City is the smallest.

It's the third most populous continent after Asia and Africa, with a population of 742.6 million (2018) or about 11% of the world's population; however, according to the

United Nations, Europe's share will fall to 7% in 2050, numbering 653,000,000. (source—Wikipedia)

Dates & Reminders

- ✿ **School closure** –October 26
- ✿ **Halloween Party!**—October 31! Come to school in your costume!
- ✿ **Reminder!** – Small Hands order is due on Oct 19th
- ✿ Be sure the **GATE** is latched, OK!
- ✿ **Tuition and Registration** – A full month's tuition is due on the first of every month. Checks payable to Martha Morgan.

Small Planet Business

Tuition – A full month's tuition is due on the first of every month. [Please make checks payable to Martha Morgan.](#)

Morning lessons are from 9.00 – 11.30 and afternoon lessons 1.00 – 3.30. There is 15 minutes before and after class for drop-off/pick-up. Please observe these times.

Tiny Treasures – Any works at home? Bring 'em on back!

Guest Speakers – If you would like to share a special interest, hobby or holiday tradition, please have a word with Martha! The children really love to hear about special ways to celebrate!

Veronique – Every Thursday 1 – 2 p.m. \$15.

Music – Our Music Teacher will be in every Tuesday at 9:30.

Snack – Is it your snack day? Please swap with someone if you're going to miss your child's day.

Lunch – 11.30 to 12.30. If your child stays for lunch there is an extra fee of \$15 per lunch session. Packed lunch to be brought from home. Lunch not included.

| | |
|---------------|------|
| Lunch session | \$15 |
| Extra class | \$45 |
| Extra hour | \$15 |
| French | \$15 |

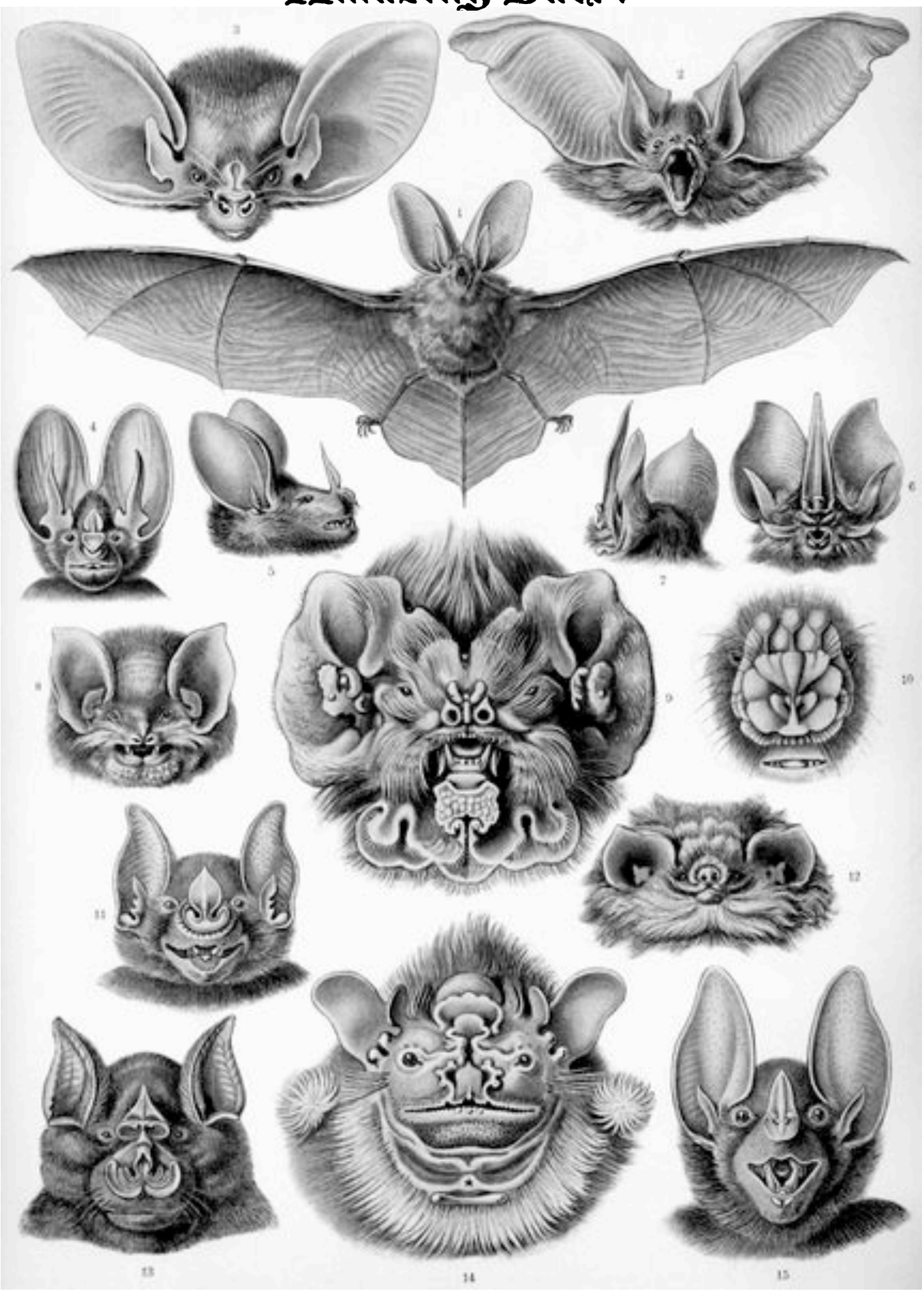
Coats! – [Please be sure your child's coat is weather appropriate.](#)

Friday pick up! Please collect your child by at 12.45 on Fridays. The school closes for the weekend at 1pm on Friday.

Thank You from
Martha & Donna!

See you at the gate! — Martha

Amazing Bats!



School – When to Stay Home

It is our goal for students to attend classes every day school is in session. However, there are times when students need to stay home for their own health and/or the health and safety of others. Below are some guidelines to help families decide when to keep students at home:

- **Diagnosed Strep Throat or Bacterial Conjunctivitis (Pink Eye):** Must stay home 24 hours after first dose of antibiotics.
- **Diarrhea:** Three or more loose or watery stools in a 24-hour period, especially if the student feels ill. Students should stay home for 24 hours after the last watery stool.
- **Eyes:** Draining mucus or pus or that have unusual redness, itchiness or pain not due to injury or allergy.
- **Fatigue:** Students who are unusually tired, pale, lack appetite, or who are difficult to wake, confused, or unusually irritable.
- **Fever:** Temperature 100 degrees Fahrenheit or over. Students need to stay home for 24 hours after their temperature has returned to normal without the help of fever-reducing medications such as Ibuprofen or Acetaminophen.
- **Live Lice:** Students may return to school once treatment has begun.
- **Persistent Coughing:** Students who are unable to participate in classroom activities due to persistent coughing should stay home.
- **Rash:** Unknown origin or those known to be contagious such as ringworm, impetigo or scabies. Students may return to school as soon as treatment has begun.
- **Vomiting:** Two or more times during the last 24 hours, especially if the student feels ill. Students should stay home for 24 hours after the last time they vomited.

If your student shows any of the above symptoms at school you may be called to pick him/her up. We suggest that you also consult your health care provider.

Please consult your school nurse or health care provider if you are unsure whether or not your student should miss school due to health conditions.

Remember to report the reason for your student's absence to the office staff or school nurse according to your school's official policies/procedures.