



Small Planet Montessori

education for a peaceful planet

2122 N 53rd Street, Seattle Wa 98103, 1-206-632-3434,
inquiries@smallplanetmontessori.com www.smallplanetmontessori.com
Newsletter — March 2018



Frogs!

Frogs are members of the zoological class called Amphibia. Amphibians are cold-blooded (or poikilothermic) vertebrate animals. They differ from reptiles in that they lack scales and generally return to water to breed.

- A group of frogs is called an ARMY of Frogs!
- A group of toads is called a KNOT of Toads
- One of the smallest frogs in the world is from Cuba, and is only ½” long. The largest frog in the world is from West Africa and is about 12” long.
- Frogs have smooth skin, and long legs to help them leap. Toads have drier warty skin and short legs, and they move by crawling or hopping rather than by leaping. Technically, though, toads are just a type of frog.
- Frogs don't drink water but absorb it through their skin.
- Because frogs swallow their food whole, the size of their meal is only limited by the size of their mouth and their stomach.

Frog Gags

- Q: What happens if a frog parks in a bus stop?
A: He gets toad away!
- Q: Why are frogs always happy?
A: Because they eat whatever bugs them.
- Q: What happens when two frogs catch the same fly?
A: They get tongue-tied!
- Q: What's green and hops a mile a minute?
A: A frog with hiccups!

Dear Parents,

SPRING AT LAST! Let's hope the March winds don't bring too many April showers! Time to get to work in the Small Planet garden. What will you grow in your garden?

South America, frogs and butterflies!

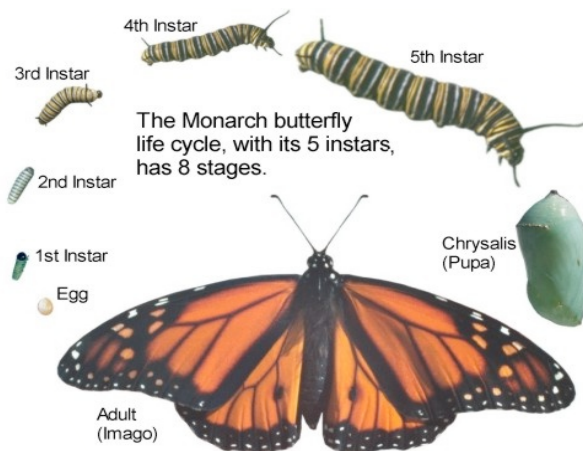
Our exciting March works will feature frogs as vertebrate of the month and butterflies as invertebrate of the month.

Continent of the month is South America, the planet's fourth largest continent and fifth most populated. The current population of South America is 425,248,909 as of, March 2017, based on the latest United Nations estimates.

It includes 12 independent countries and three major territories: the Falkland Islands, Galapagos Islands, and French Guiana.

South America has the world's highest waterfall, Angel Falls in Venezuela; the largest river (by volume), the Amazon; the longest mountain range, the Andes, and the driest place on earth, the Atacama Desert in Chile.

It includes the largest rainforest, the Amazon Rainforest; the highest capital city, La Paz, Bolivia; the highest commercially navigable lake in the world, Lake Titicaca; and, excluding research stations in Antarctica, the world's southernmost permanently inhabited community, Puerto Toro, Chile. (source—Worldatlas)



The Monarch butterfly life cycle, with its 5 instars, has 8 stages.

News, Dates & Reminders

- 🌸 **School closure** no school on 23 March
- 🌸 **Spring break** Apr. 6-13 inclusive
- 🌸 **Registration** is open for 2018/19 academic year. Registration forms are available for download from our website

Small Planet Business

Tuition — A full month's tuition is due on the first of every month. **Please make checks payable to Martha Morgan.**

Morning lessons are from 9.00 - 11.30 and afternoon lessons 1.00 - 3.30. There is 15 minutes before and after class for drop-off/pick-up. Please observe these times.

Tiny Treasures — Any works at home? Bring 'em on back!

Guest Speakers — If you would like to share a special interest, hobby or holiday

tradition, please have a word with Martha! The children really love to hear about special ways to celebrate!

Veronique — Every Thursday, 1 - 2 p.m. \$10.

Snack — Is it your snack day? Please swap with someone if you're going to miss your child's day.

Lunch Card — Please remember to keep your lunch card up to date! 20 lunches for \$200.00. Extra time will be charged at \$12.50 per hour.

Lunch — is 11.30 to 12.30

Coats! — Please be sure your child's coat is weather appropriate.

Friday pick up! Please collect your child by 3.45 and at 12.45 on Fridays. The school closes for the weekend at 1pm on Friday.

Thank You from Martha for your cooperation!

See you at the gate! — Martha